

LWKB(HB) 样品测试说明及结果

1.测试坐标原点（虚拟焦点 $x=0.049\text{mm}$, $y=0.345\text{mm}$, $z=-0.058\text{mm}$ ）

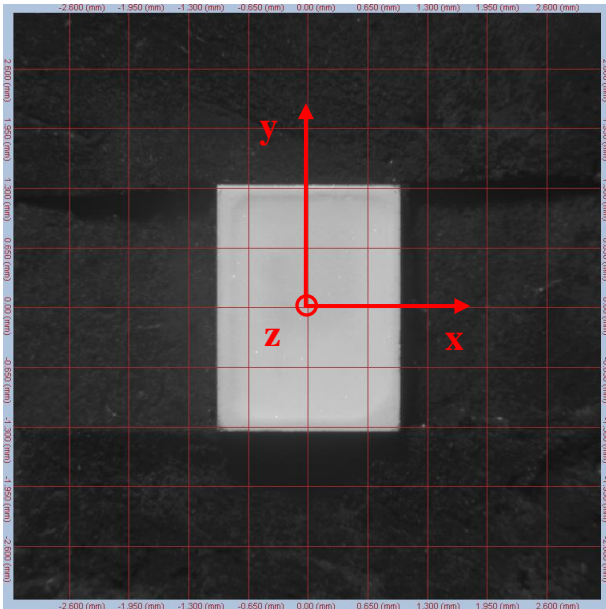


图 1 $I=0^\circ$, $A=0^\circ$

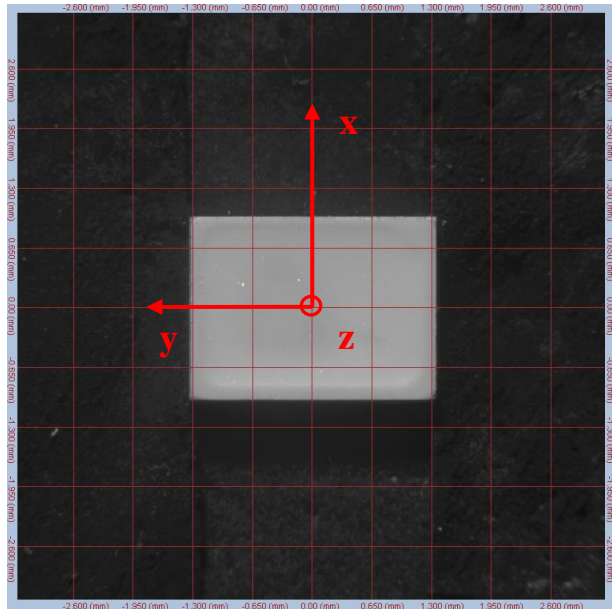


图 2 $I=0^\circ$, $A=90^\circ$

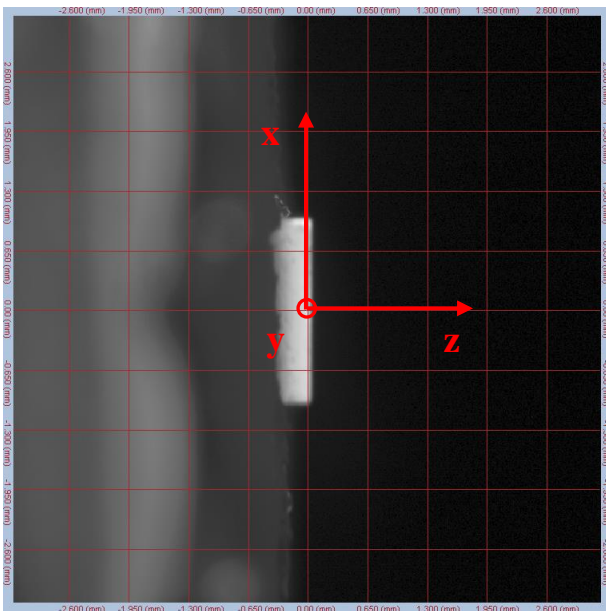


图 3 $I=90^\circ$, $A=90^\circ$

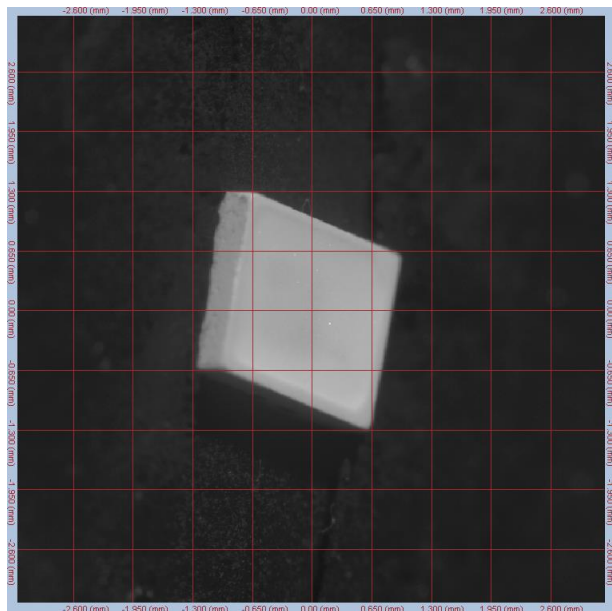


图 4 $I=50^\circ$, $A=75^\circ$

*****报告结束*****