

ACL2(BJ)-白黄双色温测试坐标原点

(白光虚拟焦点  $x=-0.4555\text{mm}$ ,  $y=-0.0155\text{mm}$ ,  $z=-0.0315\text{mm}$ )

(黄光虚拟焦点  $x=0.4777\text{mm}$ ,  $y=-0.0051\text{mm}$ ,  $z=-0.0357\text{mm}$ )

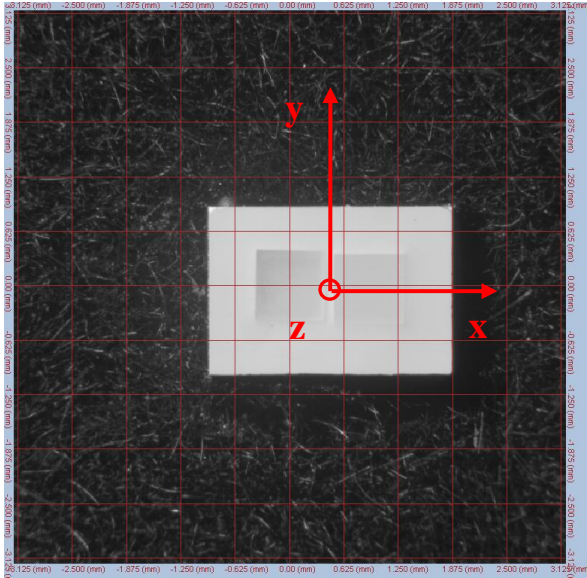


图 1  $I=0^\circ$ ,  $A=0^\circ$

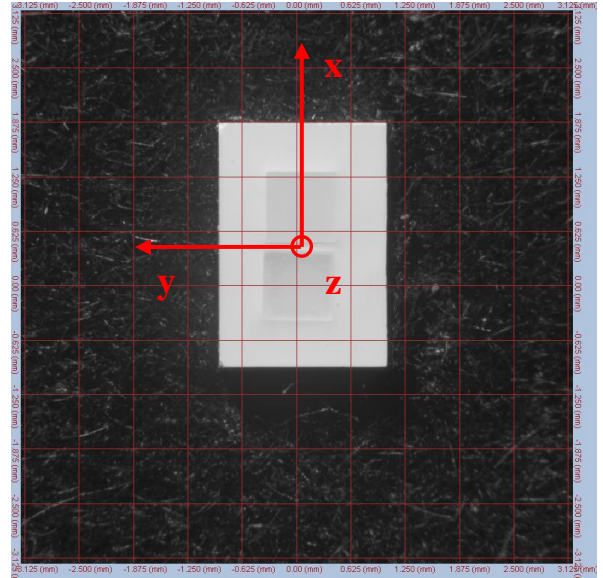


图 2  $I=0^\circ$ ,  $A=90^\circ$

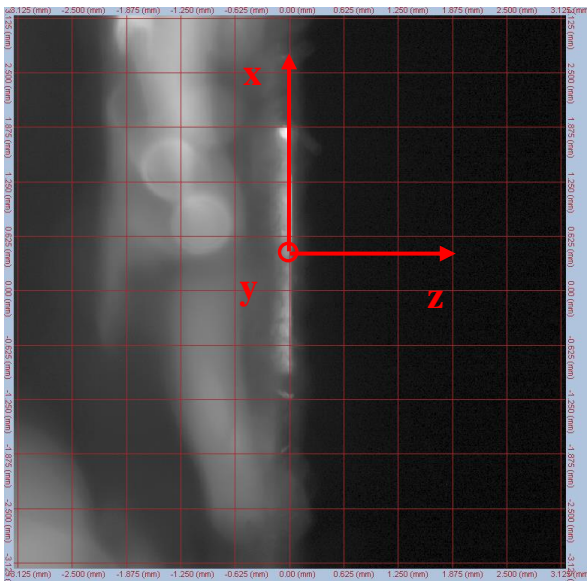


图 3  $I=90^\circ$ ,  $A=90^\circ$

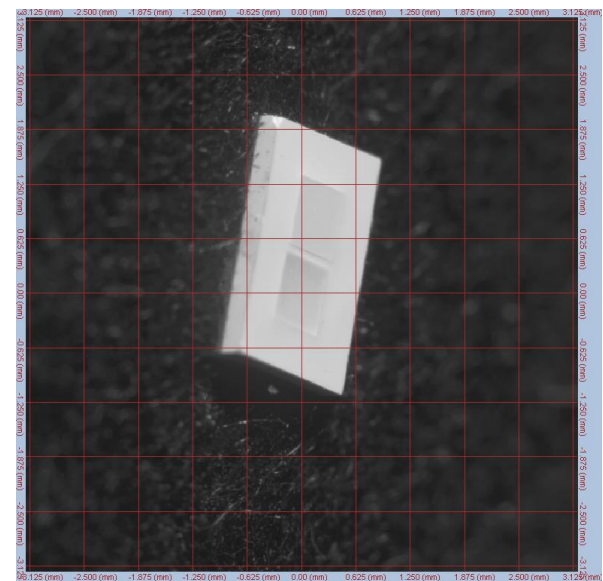


图 4  $I=50^\circ$ ,  $A=75^\circ$

